

AccuPoint® Advanced for Alkaline Phosphatase

National Conference on Interstate Milk Shipments (NCIMS) approved and U.S. Food and Drug Administration (FDA) reviewed test for measuring alkaline phosphatase in dairy products, including flavored milks and heavy creams.



Alkaline Phosphatase	
U.S. regulatory level (mU/L)	350
AccuPoint detection level (mU/L)	350
Time to result	2 minutes
Calibration	Single step

Ordering Information	
Alkaline Phosphatase Kit	9950
Positive Control Pack	9951
AccuPoint Advanced Reader	9903



800-234-5333 (USA/Canada) • 517-372-9200
foodsafety@neogen.com • foodsafety.neogen.com

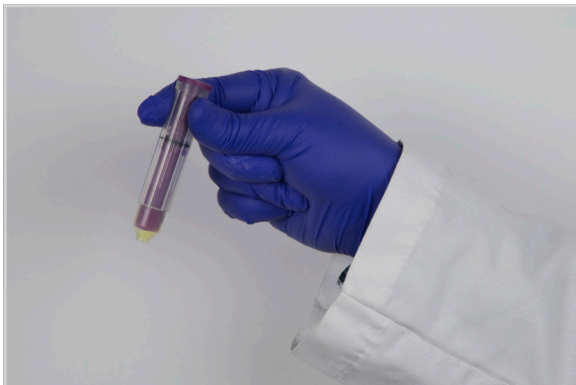


AccuPoint® Advanced for Alkaline Phosphatase

Sample Preparation:



1. Submerge sampler into milk sample and swirl for at least 3 seconds.



2. Activate sampler and shake upright for 10 seconds.



3. Add activated sampler into AccuPoint® Advanced.

Controls Preparation:



1. Samplers must be 18–24°C to run controls, samples or to calibrate.



2. Prepare negative control and reconstitute positive control vial.



3. Run controls, negative (0), then positive (350). Verify controls are within range. If out of range, refer to calibration instructions in the kit insert.



800-234-5333 (USA/Canada) • 517-372-9200
foodsafety@neogen.com • foodsafety.neogen.com

